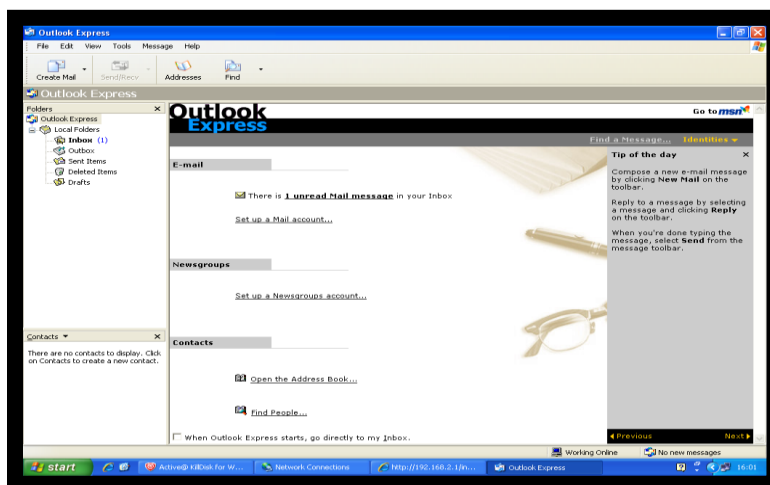
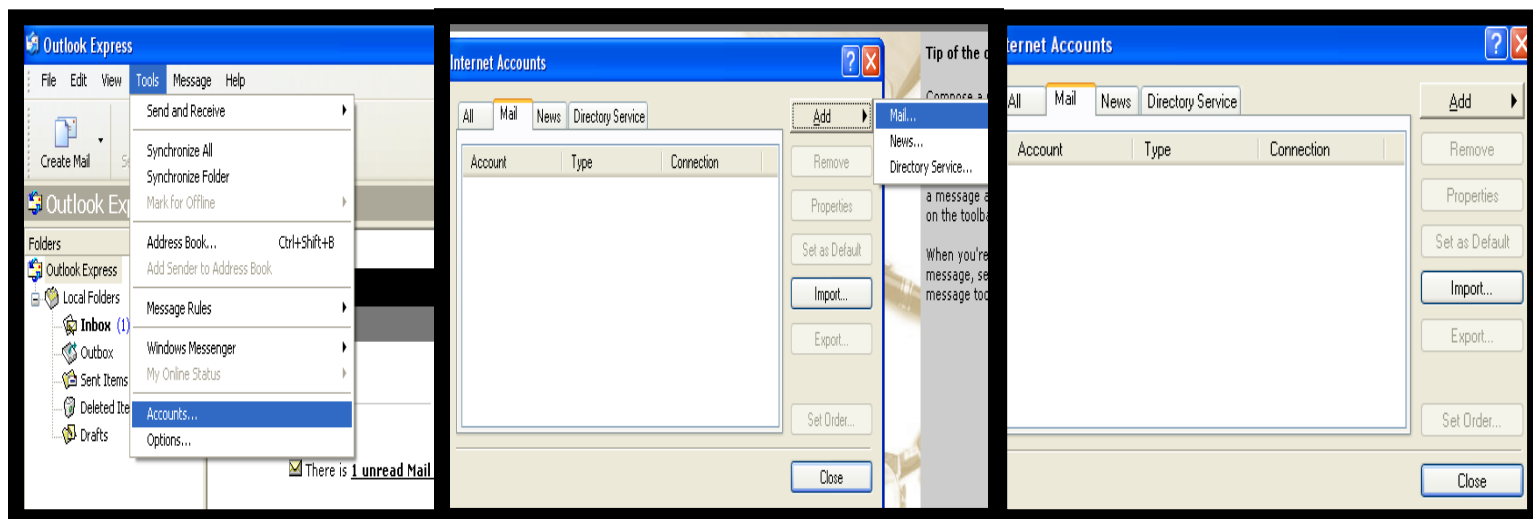


How to setup Outlook Express

To set up Outlook Express, you will need to do the following:



- On the top toolbar, select “Tools” and then from the Drop down menu select “Accounts” you will then need to click on the “Mail tab” and then “Add Mail”

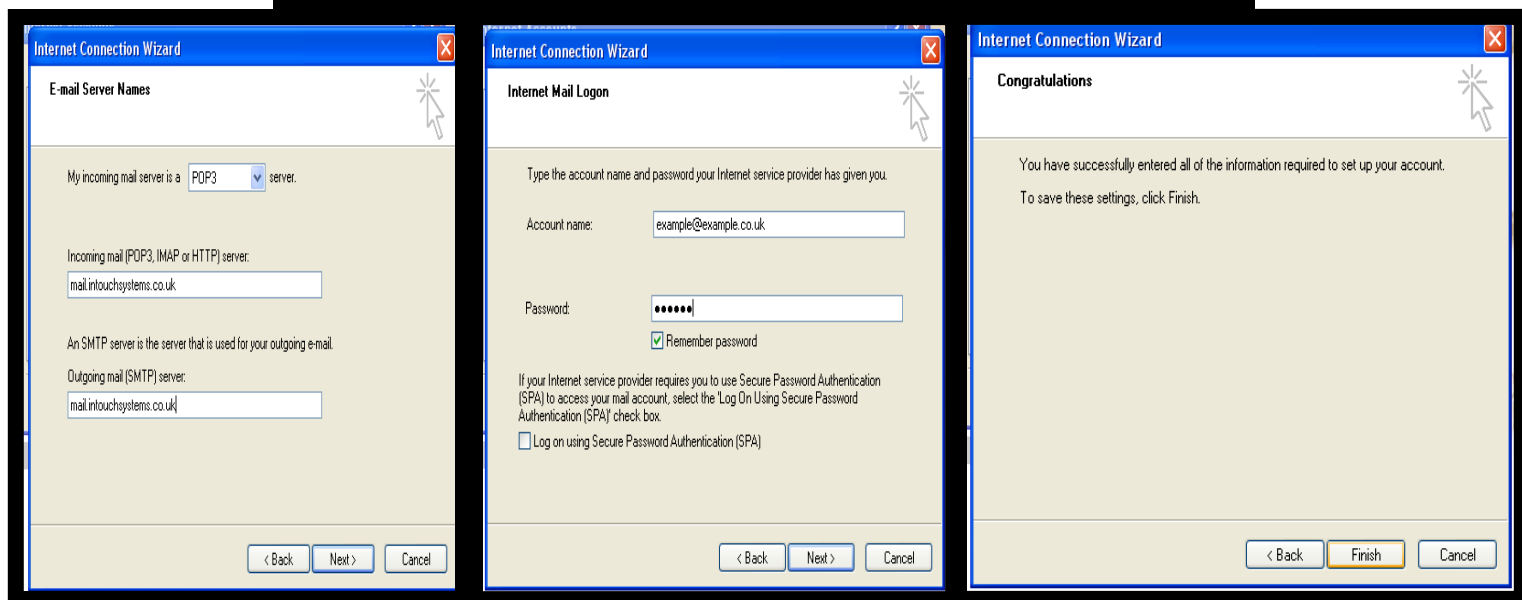
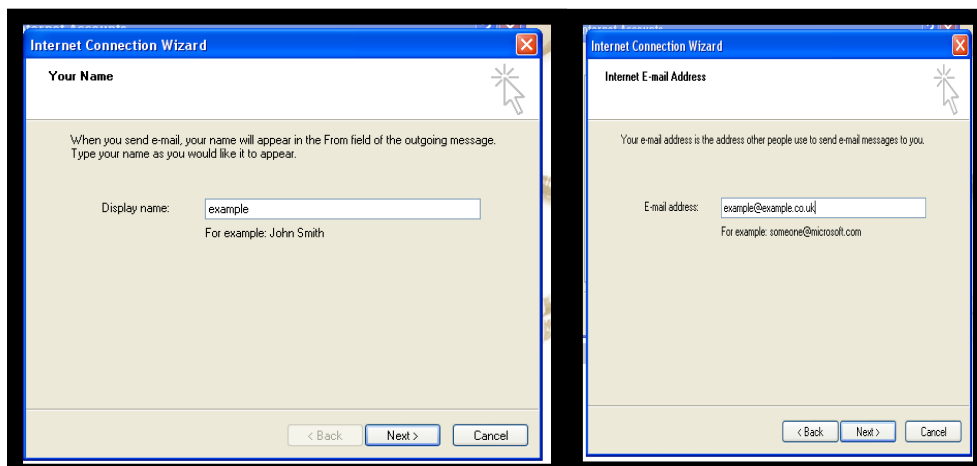


InTouch Systems is a trading name for RedShelf Limited
36 Hurricane Way, Norwich, Norfolk, NR6 6HU, UK

Telephone: +44 1603 425209 Fax: +44 1603 486987
Company Number: 5698572 VAT Number: 878 6604 68



- You will then need to enter the Account Details.



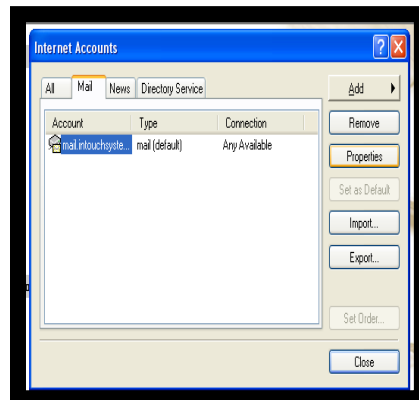
- Both mail servers = mail.intouchsystems.co.uk
- The account name is the full E-mail address
- Finally, click on “Next” and then “Finish” to complete the stage

InTouch Systems is a trading name for RedShelf Limited
36 Hurricane Way, Norwich, Norfolk, NR6 6HU, UK

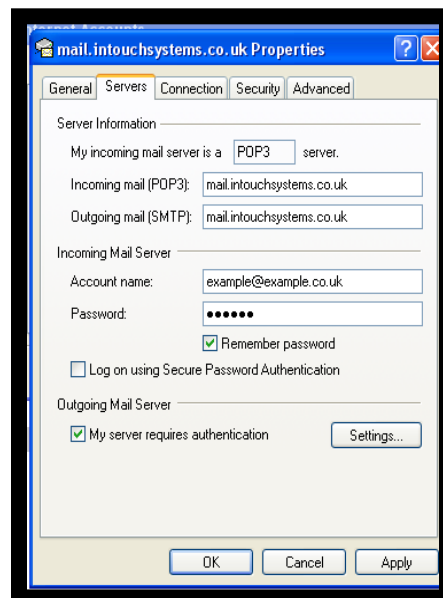
Telephone: +44 1603 425209 Fax: +44 1603 486987
Company Number: 5698572 VAT Number: 878 6604 68



- Next, make sure that you've highlighted the setup account by clicking on it once.
- Then select "Properties" located on the right hand side menu.

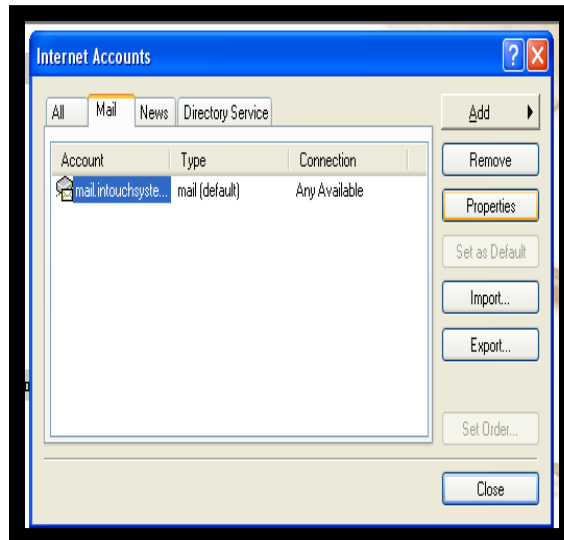


- On the Servers Tab, make sure the box "My server requires authentication" is ticked and then press "OK"



InTouch Systems is a trading name for RedShelf Limited
36 Hurricane Way, Norwich, Norfolk, NR6 6HU, UK

Telephone: +44 1603 425209 Fax: +44 1603 486987
Company Number: 5698572 VAT Number: 878 6604 68



- Finally, select "Close" and the account should now be working.

InTouch Systems is a trading name for RedShelf Limited
36 Hurricane Way, Norwich, Norfolk, NR6 6HU, UK

Telephone: +44 1603 425209 Fax: +44 1603 486987
Company Number: 5698572 VAT Number: 878 6604 68